

# THE STILT

BRIDGERLAND AUDUBON SOCIETY

Volume 22, No. 6

February 1994

## Hotline For January, 1994

A great-horned owl sat in the birch tree above our driveway New Year's Eve at dusk. I hope that's a good omen for 1994!

Bryan and I rang in the new year by birding the valley floor January 1, as did several others including Allen Stokes, Reinhard Jockel and Bob Atwood. Air temperature was 30 degrees and skies were cloudy, so the light was poor. Most of the activity was on the 20-20 Ponds, where we counted nine species of ducks: American wigeon, ring-necks, gadwalls, lesser scaup, common and red-breasted mergansers, shovelers, mallards and common goldeneye. A pair of red-breasted mergansers were hanging out at the fish hatchery on Valley View highway, and farther west on that road we spied the northern mockingbird that's spending the winter in Cache.

The turf was less crowded but the "crowd" was more exciting on Highway 23 where it joins the Benson Marina road: there we saw two eagles, one mature golden and one immature something, probably a bald. We noticed fewer than the usual numbers of hawks, but counted rough-legged and red tail, plus northern harriers and kestrels. No owls.

Reinhard also heard Townsend's solitaires in Logan Canyon the first week of the new year. There are Barrow's goldeneyes at First Dam. (What's with the new highway signs proclaiming it "Lower Second Dam?"

Did I miss something these last 30 years—has our old familiar dam gone west, or what?)

### A Bird in the Oven is Worth How Much?

So, who else is birding out there? If things don't "snap to," I may have to turn this column into a recipe exchange. We'll print only great, easy stuff you can pop into the oven on low heat before foraying out with binoculars, the kind of food that fills the house with tantalizing aromas and makes you grateful, when you return home from the chilly outdoors, that you thought to invite yourself for dinner.

For the last ten days the weather has been positively March-like. Snow's melting, trees are breaking dormancy and we're enjoying the longest January thaw I've seen in 29 Cache Valley winters. When it gets cold again, perhaps sometime around Memorial Day, I'll fix a

See HOTLINE on page 3.

## INSIDE

CALENDAR .....	2
CHRISTMAS BIRD COUNT .....	4
TAKE BACK THE WEST CONFERENCE .....	6



# Calendar

**Wednesday, February 10.** BAS General Meeting at 7:30 pm. If you've been spending time pondering land management in Cache Valley, and wondering exactly what is the Bud Phelps Natural Area, then February's general meeting is for you. George Wilson, DWR biologist, will make the long trek from Ogden to fill us in on the Bud Phelps N.A. George is looking forward to coming up and educating us on where it is, what it is, and why it's been set aside. See you February 10th in the Logan City building.

**Wednesday, February 16.** BAS Planning Meeting at 7 pm. We'll meet at Alice Lindahl's new home, 1738 Country Club Drive. All board members, officers, chairpersons and any interested members are encouraged to attend.

## Field Trips

**Saturday, February 5.** Annual Bald Eagle Day sponsored by the Utah Division of Wildlife Resources. This trip will go to the Salt Creek Wildlife Management Unit about 10 miles west of Brigham City. With luck there should be several dozen bald eagles feeding on carp in the creek. Excellent viewing from a knoll overlooking the creek. Leave at 10 am from Fred Meyer's parking lot and return by mid-afternoon. Bring lunch and warm clothes for it can be windy there. The Division of Wildlife Resources will have staff there to tell about bald eagles and may even have hot chocolate on hand. For those wishing to go at another hour call Al Stokes for instructions.

**Saturday, February 26.** Tracks in the Snow. Veteran tracker, Kayo Robertson, will take the group to Third Dam and Guinavah Campground where we should see weasel, rabbit, mice, and deer. Kayo has been seeing cougar tracks up there, and beaver have been active. Always a chance to see porcupine tracks and even track one to its den. No skis or snowshoes needed. Leave at 1 pm from the new Forest Service building on Highway 89 across the street from Logan Golf Course. Return by 4 pm. If it is snowing Kayo has lots of indoor activities planned.

**Saturday, February 12.** Beaver Along the Bear River. Al Stokes will take the group into Benson to see where beaver have been cutting trees and carrying them to their food stores. Also a good opportunity to observe bird and mammal tracks. Leave at 1 pm from southwest corner of Fred Meyer's parking lot. Return by 4 pm. Al will recount history of the early beaver trade in Cache Valley while roasting marshmallows.

**Saturday, March 5.** Bald eagles at Willard Canyon. A great way to watch eagles as they fly into Willard Canyon to roost and to soar above us. A rigorous hike to be led by Jim Sinclair and Reinhard Jockel which takes you to a lookout overlooking the canyon and closer looks as the eagles fly in and soar. Viewing is good down below. This is a good chance to see migrating bluebirds, a few early butterflies, and the tiny Draba wildflower. Leave at noon at the southwest corner of Fred Meyer's parking lot and bring a lunch.

## Common Ground Outdoor Adventures

**Thursday, March 17 and Thursday, April 7.** Downhill Skiing at Park City. Both people with and without disabilities are invited to join us for a day of downhill skiing. Park City has an adaptive ski program for people with disabilities. After skiing, we'll go for dinner in Park City. Meet at OPTIONS for Independence, 1095 N. Main, at 9 am. Cost is \$15 for people with disabilities; \$20 for people without disabilities. Cost includes equipment rental, a lift pass, and a two-hour lesson (if needed).

A pre-trip meeting will be held Tuesday, March 15 at 6 pm, 1095 N. Main.

All trips involve people with and without disabilities and are adapted to accommodate everyone's needs. Accessible transportation is provided on a first come, first served basis. Call in advance to reserve your space on a trip! If you are going on a trip, you must attend the pre-trip meeting! If you cannot attend, please send someone in your place or call.

COMMON GROUND is looking for energetic, adventurous people who enjoy the outdoors to be trip initiators. A trip initiator is someone who simply generates an idea for an outdoor trip. For example, a trip initiator might suggest that we go to Moab for a rafting trip from June 15 to June 20. The initiator would then set a date for the pre-trip meeting approximately one week prior to the trip (June 7). At this point, trip responsibilities are equally shared by all participants. At the pre-trip meeting, responsibilities will be divided among the participants and final plans will be discussed. The trip initiator is preferably someone who is familiar with the activity. The trip initiator is NOT the trip leader! Once the ball gets rolling, the success of the trip is the responsibility of the group.

For more information on how you can become involved in COMMON GROUND, please contact Kate Stephens at 753-5353.



## Hotline

Continued from page 1.

roasted chicken and vegetables. Chickens large enough for this utterly painless and simple meal (but one that makes drop-in guests think you've slaved at least half a day in the kitchen, or else are Julia Child's closet cousin) weigh about five to six pounds and are called fryer-broilers, but they're really roasting chickens.

Here's what you do: You take that chicken, remove the little bag of giblets and freeze it for later, and rinse the bird nicely inside and out. If you're feeling fancy and domestic you can make your favorite stuffing, but—trust me—all you really need to do is stuff the cavity with half a lemon and about six cloves of garlic, smashed but unpeeled. Lay the chicken on its back in a largish roasting pan, about 10 by 15 inches, rub it with butter if you're not feeling guilty about fat or leave it ungreased if you are, and sprinkle the skin with paprika. Now scrounge through the vegetable bin in your refrigerator and take out carrots, onions, potatoes, turnips and celery (if you like it cooked). Cut the unpeeled potatoes lengthwise, chunk up the onions, and do anything you'd like with the other veggies. Arrange them artistically around the chicken, drizzle olive oil over the whole shebang and sprinkle it all with crushed rosemary and garlic pepper. Put the pan in the oven, turn it on to 325 degrees, and go away for about three hours, depending on how done you like your roast chicken. (I like mine positively falling off the bone so I cook this a minimum of 40 minutes a pound.)

Think of it! For three hours you are free to take a walk, watch birds, or snooze in front of the fireplace—you don't even need to baste this delight, though you can if you're the fretful sort of cook—and at the end of the time you have Real Dinner instead of phoning up for take-out pizza. If you're a committed vegetarian, just roast the vegetables. They're wonderful all by themselves.

Call me with any Hotline tidbits—hot or cold birds, spring flowers, great-but-easy food. Happy trails and clean binoculars to you all in 1994.

— Nancy Williams, 752-6268

## Want a Good 1994 New Year's Resolution?

Recruit one new Audubon member using an application that has our chapter's name on it and chapter code-W-52. Get these from any officer. You will be surprised how many people have been putting this off for lack of an application blank. Our chapter gets \$15 for each new member we recruit.

## Fund-Raising the Easy Way

Bridgerland Audubon needs to raise some money to help two projects: Complete the Stewart Wildlife Park along Logan River, and Ron Hellstern's proposed South Cache Wildlife Habitat Area. Smith's Food Stores has a way that will help. Buy a \$20 Food Certificate from me and you can use this to buy \$20 worth of food and drugs at any of its stores—no time limit. Audubon will receive 10 percent of the amount of certificates we buy from Smith's. I hope you will use this to help out. Call Al Stokes at 752-2702 after February 1 if interested.

## Thanks Susan!

As some of you may recall, last month we ran a "help wanted" ad for a computer whiz. Susan Durham responded with great enthusiasm. Susan's official title is Circulation Officer. She will be responsible for keeping BAS memberships and labels for the *Stilt* updated. If you are not receiving your *Stilt* or have an address change contact Susan Durham at 1526 East 2700 North, North Logan, UT 84321, 752-5637.

## Bits and Pieces

How much birds play a role in our lives and add richness and mystery!

There are peoples who await an auspicious time for a celebration or planning an important event.

*Auspicious* is Latin for watching birds for augury. Augury named after Augur a Roman priest, was a process for foretelling fortuitous events by watching flights of birds. Hence, as we await an auspicious occasion or plan for a special event, we may say we are awaiting and watching for a unique or happy flight of birds.

Whatever may happen, I am always happy for a flight of birds. The more the better.

Our language is enriched further when we realize that *aviary* and *aviation* both derive from *avis*, the Latin for bird, and hence a place, albeit unnatural, for birds to be housed and an aviator who flies. Sometimes better, sometimes worse than birds.

We await the auspicious arrival of migrating birds and are melancholy at their seasonal departure.



# Christmas Bird Count

It's the right thing to do—and real, too—this traditional Christmas Bird Count we help out with. Coast to coast and border to border, Audubon chapters all over the country mobilize to count the birds that fly by during one 24-hour period.

This year's count, the 94th annual, was held December 18. Seventy-three Bridgerland Auduboners with various friends and relations turned out for it, many of whom paid the \$5 required by National for the privilege of standing out in the cold, gawking for birds. The money goes to help defray the cost of publishing the count results on a more massive scale than our humble efforts here at *The Stilt*.

We did well right here, tallying more than 12,000 birds of 91 species, which is above average. (Our best year we got 99 species.) Rare but not unexpected sightings included two tundra swans, three hooded mergansers, a ferruginous hawk, a hermit thrush, a California gull and a white-throated sparrow. The most prevalent bird, to nobody's surprise, was the starling: 3,948 of them.

Up here in the more northerly latitudes, the Christmas Count is practically guaranteed to be the kind of field experience that requires long underwear. This year in Cache Valley, bird-counting weather was balmy than recent years—unless you were John Barnes, who started standing outside at midnight, calling owls. It always seems deathly cold in the wee hours of winter. John's a hardy soul with admirable dedication to the cause, and we salute him from the cozy glow of our word processor.

Some of us stayed indoors and nursed head colds, counting birds at the feeder. (We didn't have to pay to do that!) Afterwards, all who were not napping gathered at Sue Robertson's home for potluck dinner and Sue's pretty mean eggnog—thanks, Sue.

We got great press coverage out of this year's event, since Tim Vitale spent the day covering the event for the *Herald Journal* (paid his \$5, too—what a guy!) Photographer Diane Bush got some interesting color photos of some particularly hard-core birders, and we ended up on the Sunday Focus page, looking darned good.

It's a nice, cool way to spend a winter day, and keeps you out of the eminent danger posed by a shopping mall's parking lot at the holiday season. Next year maybe you can join us.

— Nancy Williams and Keith Archibald

This is a checklist of species seen on previous Logan CBC's or in the CBC area in mid-December. Each species is prefaced with an abundance code. 1 = a bird seen easily in the appropriate area. 2 = a bird that should be present but may require some effort to find. 3 = a bird expected but hard to find. 4 = a BOLDFACE bird: rare but not unexpected. 5 = a BOLDFACE bird: rare and unexpected. All code 4 and 5 species require full, written documentation.

2	Pied-billed Grebe	1
1	Great Blue Heron	7
4	Tundra Swan	2
1	Canada Goose	91
2	Wood Duck	34
2	Green-winged Teal	3
1	Mallard	656
2	Northern Pintail	2
1	Northern Shoveler	22
1	Gadwall	195
1	American Wigeon	19
3	Canvasback	3
1	Redhead	11
1	Ring-necked Duck	87
1	Lesser Scaup	9
1	Common Goldeneye	127
1	Barrow's Goldeneye	58
3	Bufflehead	4
4	Hooded Merganser	3
2	Common Merganser	17
2	Ruddy Duck	2
1	Bald Eagle	16
1	Northern Harrier	40
2	Sharp-shinned Hawk	6
2	Cooper's Hawk	3
1	Red-tailed Hawk	72
1	Ferruginous Hawk	1
1	Rough-legged Hawk	11
1	Golden Eagle	7
1	American Kestrel	45
3	Merlin	1
2	Prairie Falcon	4
3	Chukar	1
1	Ring-necked Pheasant	80
	Sharptail Grouse	8
2	Sora Rail	1
2	Virginia Rail	2
1	American Coot	8
1	Killdeer	13
1	Common Snipe	27
	California Gull	1
1	Rock Dove	449
1	Mourning Dove	8
1	Western Screech-Owl	3
1	Great Horned Owl	20
3	Northern Pygmy-Owl	2
3	Short-eared Owl	4
3	Northern Saw-whet Owl	2
1	Belted Kingfisher	7
1	Downy Woodpecker	28
2	Hairy Woodpecker	2



# STEWART NATURE PARK

## ENGRAVED GRANITE TILE ORDER FORM

### TEXT

1" high letters
12 letters per line
3 lines

\$60.00 for Audubon Members

\$100.00 for Other Individuals

\$200.00 for Businesses



### GRAPHICS

Line Drawings of Business Logos Family Crests etc...
--

\$100.00 for Audubon Members

\$150.00 for Other Individuals

\$200.00 for Businesses

*Both tiles are one foot square mahogany granite and are professionally engraved by Logan Monument. The tiles will be placed permanently in the park.*

*L.E.A.F. (The Logan High Environmental Club) will use the funds raised to restore Stewart Nature Park.*

### TEXT TILE

Please print text requested in the boxes provided below.

Line #1 

--	--	--	--	--	--	--	--	--	--

Line #2 

--	--	--	--	--	--	--	--	--	--

Line #3 

--	--	--	--	--	--	--	--	--	--

Tiles with additional text or special fonts are considered **graphic tiles**. If you choose to use this option, please include a drawing displaying the way you would like the text arranged.

Mail check or money order and order form to:

**BRIDGERLAND AUDUBON SOCIETY**  
**STEWART NATURE PARK**  
**1780 EAST 1400 NORTH**  
**LOGAN, UT 84321**

For more information contact  
Saundra Schimmelpfennig at 755-0779.

### GRAPHICS TILE

☐ I have enclosed a line drawing for reproduction on the tile.

☐ I request text not included in the drawing and have included it below.


☐ I have a preferred font style and/or size and have indicated it below.

Font \_\_\_\_\_ Size \_\_\_\_\_

Name \_\_\_\_\_ Phone \_\_\_\_\_

Address \_\_\_\_\_

☐ Text tile

☐ Graphic tile

☐ Audubon

☐ Individual

☐ Business

**ALL COSTS ARE TAX DEDUCTIBLE**





Watch a butterfly, listen to a bird, experience the wind-worn smells of nature, follow an animal track in the snow. These opportunities await you at the Stewart Nature Park, which is located at 100 S. and 700 E.

A bridge leads across the river and into a grassy field. Ghost paths trace their way through the four acre area. The park is bordered on one side by the Logan River, and the wooded hills leading to River Heights border the other. T

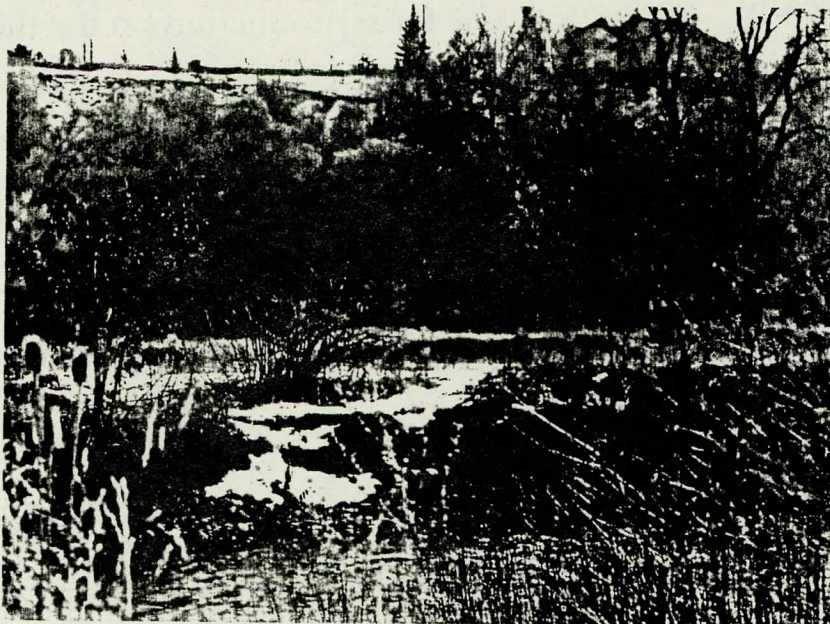
The Stewart Nature Park is a community effort reflecting the commitment of the Cache Valley citizens towards caring for their natural environment. The list of volunteers who have provided both their time and expertise is seemingly endless.

Future plans for the park include a trail system with interpretive signs, an information shelter, an amphitheater, and an observation deck near the Logan River. Plans also include the reintroduction of native plants, and places for rest and contemplation. The ultimate goal is to establish an outdoor classroom that is beautiful, informative and accessible to all.

To provide funds for these improvements to the park L.E.A.F. (The Logan High environmental club) is selling engraved granite tiles. The tiles are one-foot square mahogany granite and are professionally engraved by Logan Monument. The tiles will be permanently placed in the park.

The two types of tiles are text and graphics. The text tiles contain three lines of text with twelve letters per line. These are perfect for short sayings or your family name. Tiles with more than the allotted letters or special type, such as family trees, are considered graphic tiles. Graphic tiles also include tiles with just graphics or graphics and text such as company logos or family crests. To facilitate quality engraving all artwork should be simple line drawings.

Through continued community support our dreams are becoming a reality. Please join us in creating a nature park dedicated to the understanding and appreciation of our natural environment.



See other side for order form and prices. All costs are tax deductible. Orders received before Feb. 20th will be placed in the park during Earth Week. Orders received after Feb. 20 will be placed in the park throughout the summer and fall.



1	Northern Flicker	85
1	Horned Lark	78
2	Steller's Jay	1
2	Clark's Nutcracker	8
1	Black-billed Magpie	355
1	American Crow	75
2	Common Raven	7
1	Black-capped Chickadee	186
1	Mountain Chickadee	12
1	Red-breasted Nuthatch	8
2	Brown Creeper	3
3	Canyon Wren	1
1	Marsh Wren	5
1	American Dipper	8
2	Golden-crowned Kinglet	1
2	Ruby-crowned Kinglet	25
1	Townsend's Solitaire	48
4	Hermit Thrush	1
1	American Robin	317
1	American Pipit	23
1	Cedar Waxwing	32
1	European Starling	3948
3	Yellow-rumped Warbler	1
1	Rufous-sided Towhee	17
2	American Tree Sparrow	45
1	Song Sparrow	94
4	White-throated Sparrow	1
1	White-crowned Sparrow	121
3	Harris's Sparrow	2
1	Dark-eyed Junco	859
1	Red-winged Blackbird	282
1	Western Meadowlark	1
3	Yellow-headed Blackbird	8
1	Brewer's Blackbird	324
3	Cassin Finch	7
1	House Finch	496
1	Pine Siskin	584
1	American Goldfinch	380
1	House Sparrow	1364

## Renewals

Keith Archibald	June Neville
Leon C. Astle	Linda Rawlins
Dinae Behl	Michael & Mary Lu Roskelley
Nolan Bingham	Jack Schmidt & Barbara Rusmore
Kenneth Brewer	Robert Schmidt
Merv & Mae Coover	John Sigler
Norbert V. Debye	Kennita Thatcher
Bryan Dixon & Jean Lown	Marie Veibell
Diane Driscoll	Maureen Wagner
Gail Duering	David & Ben Walden
Charles Gay	Homer & Elizabeth Walker
Al Hofmeister	Rene Walker
R.M.R. Holdredge	David Winn
Lyman Jensen	Paul G. Wolf
Reinhard Jockel	James Woodson
Doug Johnson	
John Kadlec	
J.A. Logan	
Jennifer Matos	

## New Members

Joni Andersen	Shannon Knapp
Mearl Kay Bair	Kristen La Vine
Mindy Bell	Sean McCandles
Nannette Berntson	Bruce W. McCormick
Stephen Bialkowski	Laura Musacchio
Kyle Brakensiek	Delbert Napper
Mr. & Mrs. J. B. Clifford	D. Richard Nelsen
Robert Diehl	Michael P. O'Neill
Joy Dougherty	Julia Shannon
Mr. & Mrs. James Graham	Theresa Sozio
Nathan Harris	Nick & Marie Stricklan
Holly Jeppson	Don Tibbitts
Jung Joo Kim	

## Drive on the Wildside With Wildlife License Plates

Designed to raise funds for financially strapped Division of Wildlife Resources programs, purchasing one of three wildlife license plates exhibits your support for wildlife conservation projects, preservation, protection, access and habitat management. See application form.

### APPLICATION FORM

FILL OUT THE FOLLOWING INFORMATION AND MAIL IT ALONG WITH YOUR DONATION OF \$25 OR MORE (CHECK OR MONEY ORDER ONLY—PLEASE DO NOT SEND CASH) PAYABLE TO

UTAH DIVISION OF WILDLIFE TO:

**Utah Wildlife License Plate**

**Utah Division of Wildlife Resources**

1596 West North Temple

Salt Lake City, UT 84116

(801) 538-4844

Contributor's Name

Contributor's Address

City/Zip Code/Phone

Amount of donation \$

☐ Cutthroat Trout ☐ Elk ☐ Great Blue Herron

You will receive your Certificate in about 10 days.  
Take it to the **Department of Motor Vehicles**  
to get your **Wildlife License Plate**.



# REGIONAL NEWS



We are proud to announce the  
Ninth Annual Utah Wilderness Association  
Wilderness Poetry Competition

First Prize : \$100.00  
Deadline: February 15, 1994

All poets are invited to participate in an exciting competition sponsored by the Utah Wilderness Association. In an effort to enhance the body of modern wilderness poetry, we are seeking unpublished poetry related to the theme of wilderness, its preservation, its life and values, its spiritual nature or any of the preceding themes. A prize of \$100.00 will be awarded to the winning poet. The winning poem and five honorable mentions will be reprinted in a special spring 1994 centerfold of the UWA Review and will be circulated throughout the West in June.

## CONTEST RULES

Poems must not exceed 40 lines, may be in any style and must be limited to the themes above. No more than three poems may be entered by any poet. Each poem must be accompanied by an entry fee of \$3.00. Send two copies of each poem (one must include your name, address and phone number; the second must contain the poem only) to POETRY/ UWA, 455 East 400 South #306, Salt Lake City, Utah 84111 (801) 359-1337

— Margaret Pettis  
Poetry Coordinator  
(801) 359-1337

## The Tucson Audubon Society's 24th Annual Institute of Desert Ecology

The 1994 Institute of Desert Ecology will be held April 28 to May 1 in a camp set against the spectacular backdrop of the Santa Catalina Mountains at Catalina State Park. This program brings together 60 participants and six expert instructors for field studies of the Sonoran Desert ecosystem. Studies focus on the relationship between plant life, animals and the physical characteristics of the deserts. The registration fee of \$275 per person includes instruction, camp services and all meals. Participants must be 18 or older and must furnish their own tents or campers. A limited number of partial scholarships are available. University credit is available for an additional fee. For further information, please contact Cynthia Lindquist, Tucson Audubon Society, Institute of Desert Ecology, 300 E. University Blvd., Tucson, AZ 85705. Daytime phone (602) 629-0757.

## Take Back The West

A Chance for Grazing Activists  
to Reclaim the West

Salt Lake City, Utah

Saturday, February 19, 1994  
8:30 a.m.  
until the cows come home

This conference is intended to give participants the knowledge necessary to combat the wise use movement in the West and win back our public lands. Whether your interest lies in animal damage control, the anticipated grazing regulations, tools to use to protect our lands from grazing impacts, or connecting with other reform-minded people from around the inter-mountain West, this conference has something for you.

You can join us for the conference and find solutions to the continuing debate by attending workshops, listening to inspirational and thought-provoking speakers, and discussing ideas with others interested in the same goal: preventing cows from trampling on other key values of our public lands.

## TAKE BACK THE WEST REGISTRATION FORM

Must be received by February 6, 1994

Please complete and mail to Grazing Conference, c/o SUWA, 1471 South 1100 East, Salt Lake City, UT 84105.

(Conference fee, \$35/person after February 6, 1994.)

NAME \_\_\_\_\_

ADDRESS \_\_\_\_\_

CITY \_\_\_\_\_ STATE \_\_\_\_\_ ZIP \_\_\_\_\_

PHONE: Day ( ) \_\_\_\_\_ Eve ( ) \_\_\_\_\_

ORGANIZATION \_\_\_\_\_

☐ I would like to apply for host housing on:

☐ Friday night

☐ Saturday night

☐ Please send an application for travel assistance.



## NATIONAL AUDUBON SOCIETY

# PEOPLE & WATER & WILDLIFE



## Convention 1994

Please set aside the dates of November 11-20, 1994 and plan to attend our next National Convention to be held in south Florida.

This event promises to be our most exciting National Convention ever. It offers a unique opportunity to participate with other Auduboners in a traditional convention format in Fort Myers, Florida, plus a chance to travel across the Everglades in a mobile "learning lab" and wind up in Miami for an Audubon sponsored National Conference on Population. Under the theme "**People, Water & Wildlife**" we will enjoy the glorious birds and wildlife of south Florida and discuss the crisis of survival that the Everglades, our greatest wetlands ecosystem, is facing. South Florida is a fascinating laboratory demonstrating how people and wildlife have both failed and succeeded at living side-by-side.

The National Convention is a unique opportunity for chapter leaders and members to get up-to-date on issues, share chapter strategies and get to know our terrific Audubon staff. We hope that every chapter will send one or more representatives to this worthwhile event . . . an opportunity that comes every two years! We are relying on our chapter network as a major resource for notifying members and thank you for all the assistance you can give.

Nearly 90 years ago Audubon wardens stationed in the Everglades fought to save remnant populations of wadingbirds from the slaughter of the plume hunters. Today, new circumstances threaten this unique and imperiled ecosystem. Audubon is again resolved to be the leader in this fight! It is a critical time for the fate of the Everglades. Come and learn about Audubon's campaign to save it and how you and your chapter can be involved. Our Florida members look forward to welcoming you to the Sunshine State!

### '94 BIENNIAL NATIONAL CONVENTION November 11-15, 1994

**Sheraton Harbor Place Hotel and  
Harborside Convention Center**  
*Edwards Drive, Fort Myers, Florida*

- Provocative Speakers • Field Trips
  - Educational Exhibits
- Nature Shop • Workshops
- Activist Training Sessions

### MOBILE LEARNING LAB November 16-17, 1994

**Flamingo Lodge on Florida Bay**  
*Everglades National Park, Florida*

- Special two-day expertly guided group tour into the heart of the Everglades!

### POPULATION CONFERENCE November 18-20, 1994

**Hyatt Regency Hotel**  
*400 SE Second Avenue, Miami, Florida*

#### Population Conference — The Road From Cairo

- Follow-up on the U.N. International Conference on Population and Development
- Hear reports from Cairo • Discuss U.S. national policies of population, environment and consumption
  - Showcase innovative solutions • Set the agenda for the next decade

Mail form to: **Audubon Convention Office**, 4150 Darley Ave., Suite 5 • Boulder, CO 80303-6537 or FAX 303/499-0286

(Thank you for printing or typing.)

Name \_\_\_\_\_

Address \_\_\_\_\_

\_\_\_\_\_  
\_\_\_\_\_

Please check the program(s) for which you wish information.

- ☐ '94 National Convention  
☐ Mobile Learning Lab  
☐ Population Conference



Mervin & Mae Coover  
435 Canyon Rd  
Providence UT 84332

Nonprofit Organization  
BULK RATE  
U.S. Postage  
PAID  
Permit No. 104  
Logan, Utah

The Bridgerland Audubon Society meets the second Thursday of each month, October through May, in the Meeting Room of the new Logan City Building, 255 N. Main. Meetings start at 7:30 p.m. The BAS Planning Committee meets at 7 p.m. on the third Wednesday of each month, September through May, at the home of Tom and Pat Gordon, (718 North 200 East, Logan). Everyone is welcome to attend.

President  
Vice President  
Secretary  
Treasurer  
Conservation  
Education  
Membership  
Field Trips  
Newsletter  
Circulation  
Publicity  
Hospitality  
Hotline  
Recycling  
Legislative Chairperson

Dawn Holzer, 258-5205  
Don McIvor, 563-6189  
Kristen LaVine, 753-5970  
Susan Robertson, 752-4598  
Jaren Barker, 753-0242  
Jack Greene, 563-6816  
Al Stokes, 752-2702  
Al Stokes, 752-2702  
Lois & Randy Olson, 752-9085  
Susan Durham, 752-5637  
Chris Sands, 755-9524  
Bill & Marjorie Lewis, 753-8724  
Nancy Williams, 753-6268  
Yvonne Wilder, 563-6437

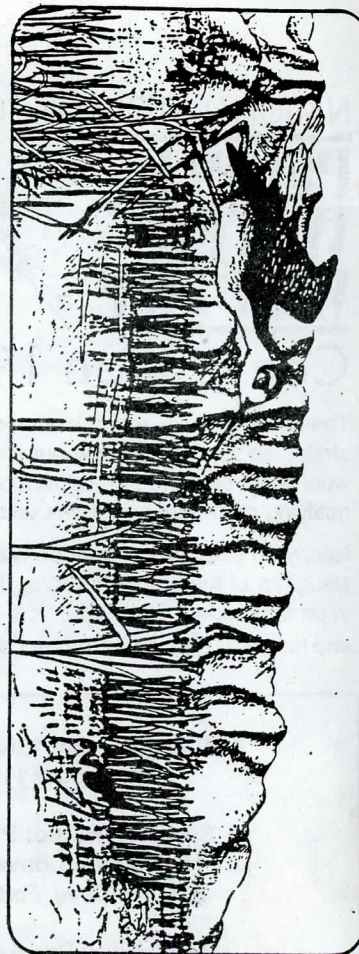
#### Trustees

1990-93 John Barnes, 563-3910; Rebecca Echols, 753-2367  
Richard Mueller, 752-5637  
1991-94 Keith Archibald, 752-8258; Ron Hellstern, 753-8750  
Bill Ehmann, 752-1684  
1993-95 Pat Gordon, 752-6561; John Sigler, 753-5879

Membership in the Bridgerland Audubon Society includes a subscription to *The Stilt*, as well as the *Audubon* magazine. The editor of *The Stilt* invites submissions of any kind, due on the 15th of each month. Send to 280 N. 300 E., Logan, UT 84321.

# THE STILT

BRIDGERLAND AUDUBON SOCIETY  
P.O. Box 3501  
Logan, Utah 84321



## National Audubon Society Chapter Membership Application

Yes, I'd like to join.

Please enroll me as a member of the National Audubon Society and of my local chapter. Please send AUDUBON magazine and my membership card to the address below.

☐ My check for \$20 is enclosed.

NAME \_\_\_\_\_

ADDRESS \_\_\_\_\_

CITY \_\_\_\_\_ STATE \_\_\_\_\_ ZIP \_\_\_\_\_

Please make all checks payable to the National Audubon Society.

Send this application and your check to:

**National Audubon Society**  
Chapter Membership Data Center  
P.O. Box 51001 • Boulder, Colorado 80322-1001  
**LOCAL CHAPTER**



**Bridgerland Audubon Society**  
P.O. Box 3501  
Logan, UT 84323-3501

W-52

Local Chapter Code  
7XCHA

Subscriptions to *The Stilt* are available to non-members for \$5.00 per year. Call Susan Durham, 752-5637. Also, call Susan for new subscriptions or address changes.