

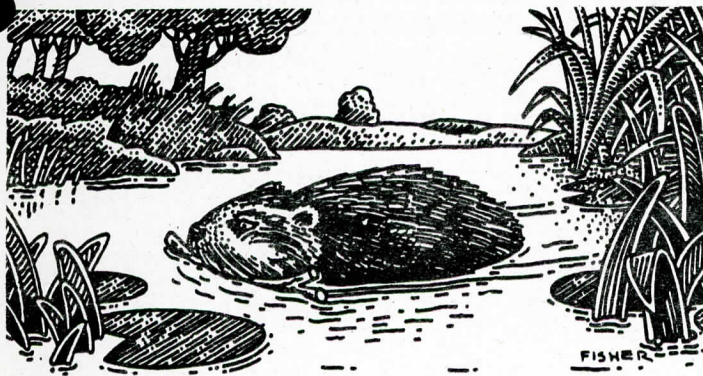
THE STILT

BRIDGERLAND AUDUBON SOCIETY

Volume 23, No. 4

December 1994

THE BEAVER HUNT



moose tracks and droppings, no actual elk or moose were to be seen, however. We also saw several types of birds. The beautiful day seemed to call them from their nests.

We all learned quite a bit on this hunt but most importantly we bagged a good time. The icing on the cake for this beautiful trip was Pepperidge Farm cookies, brought by some kind soul. Thanks to everyone who participated in this wonderful excursion.

— Heather Trecker

Saturday, October 22, while hunters were strapping on their orange and preparing for the first day of deer season, a group of about 30 people from the Audubon Society were preparing for their own hunt of sorts. Armed with the deadly Minolta or Canon, we went in search of beaver. The hunt took place at Franklin Basin where a group of rather industrious beaver have made their home.

The group was able to observe several large dams as well as a beaver den. There were several knowledgeable people on hand to tell of the fur trade days in these parts. We learned how the traders lived and how they trapped the beaver. Each of the many children present were able to leave with their own beaver chewed stick as a souvenir. We also learned how to identify elk and

INSIDE

CHRISTMAS BIRD COUNT	2
REPORT SWAN SIGHTINGS	3
REGIONAL NEWS	4

Calendar

Thursday, December 8. General Meeting, 7:30 pm, Logan City Building. Announcing, for the first time ever (in my short memory), a new approach to our general meeting; the topic: **The People's Choice.** Here's how it works. The December meeting will be everyone's opportunity to share experiences from recent (within the past year?) outings. We'll provide the slide projector and carousel, you provide the slides and stories. Kind of like show and tell. Please limit your contribution to **10 or fewer slides.** Slides can be funny, unusual, exotic, artistic, or just a back drop for a good story. The emphasis at the meeting will be a little more on socializing and just having a good time (why do we always have to wait till the end of the meeting for cookies?). To make this work we need as many people to participate as we can corral. Join us!

Wednesday, December 14. BAS Planning Meeting, 7 pm. Chair and board people get to determine which projects to work on and how to spend money. Every member's input is always welcome. Marjorie Lewis will host this month at 1277 East 100 South in Logan.

Saturday, December 17. Christmas Bird Count. Join us for all or part of the day. We will be observing and counting as many birds as possible of the birds in the count circle. No experience necessary. Beginners are encouraged, however, everyone must pay \$5.00 to cover the cost of publishing the nationwide results of nearly 1700 counts. Contact one of the area leaders or Keith Archibald, 752-8258, evenings.

P.S. There will be a pot luck dinner at Alice Lindahl and Jim Haefner's home at 6:30 pm. We will be swapping lies and enjoying good food.

Holly Faire

The Holly Faire will be on December 2-4. The Bridgerland Audubon Society will have a booth in the children's section again, making bird feeders. We need volunteers to help. Contact Dawn, 258-5205.

New Lobbyist

Utah Audubon Council has hired a new part-time lobbyist to represent us at the upcoming Utah State legislative session. Ann O'Connell, a retired school teacher, is looking forward to talking with us at a future general meeting of BAS. If you have issues of concern that you would like to have addressed talk to Ann at 277-9046.

Common Ground

Training and Ski Days

Saturday, January 14. Volunteer Instructor Training, Beaver Mountain.

Wednesday, January 18. Half-Day Volunteer Training - Cross Country.

Wednesday, January 25. Downhill Ski Day, Beaver Mt.

Saturday, January 28. Cross-Country Ski Trip.

Tuesday, February 7. Downhill Ski Day, Beaver Mt.

Wednesday, February 22. Downhill Ski Day, Beaver Mountain.

Saturday, February 25. Cross-Country Ski Trip.

Tuesday, March 7. Downhill Ski Day, Beaver Mt.

Saturday-Sunday, March 11-12. Overnight Cross-Country Ski Trip.

Wednesday, March 22. Downhill Ski Day, Beaver Mt.

Saturday, March 25. Cross-Country Ski Trip (weather permitting).

All trips involve people with and without disabilities and are adapted to accommodate everyone's needs. More info? 753-5353, ask for Kate or Shauna.

BAS Annual Banquet

We still need an organizer for the banquet.
Are you interested in helping?
Contact Dawn, 258-5205.

What Do Bats and Antarctica Have in Common?

Nothing, except that they were both featured topics at our fall general meetings!

Members Jim and Debbie Gessaman did a great job at our first meeting sharing their slides and perceptions of their trip to Antarctica. Their presentation covered the identification and biology of many birds (especially penguins), whales and seals. They also left us with some thoughts on the ecology and future of the frozen continent.

Another BAS member, Veda DePaepe, gave an excellent talk and slide show on bats for our November meeting. About a dozen third graders, who have been studying bats in school, showed up to glean some further knowledge. We all learned a lot! Bats are an

amazingly diverse group of mammals. They eat everything from insects to fruit to fish, reptiles, birds (!) and yes, blood. They play an integral role in pollination and seed dispersal in the tropical rain forests of the world. They make their homes in trees, caves, large leaves or buildings. Some can live to be 20 or 30 years old.

Be sure to come to our next meeting for the "People's Choice" slides. Everyone should bring 10 or fewer of their best slides to share with the group. If our first two meetings were any indication, we will see some rare sights and learn more nature lore. Don't miss it!

Report Swan Sightings

Birders out and about the valley this winter have been asked to report sightings of Trumpeter Swans to the U.S. Fish and Wildlife Service. Swans have been wintering in the Yellowstone Plateau since the 1930's, taking advantage of feeding programs at Red Rocks and Harriman State Parks. About 2,700 birds currently winter there. Several years ago managers decided to cease the feeding programs to prevent major disease and die-off in the population. This year birds will be hazed with aircraft to try to establish alternate wintering areas. There is a good chance that some of these birds will head our way. If you see swans, check for green collars with white numbers and letters on them. Report immediately locations, numbers of swans and any collar numbers to Vicki Roy at the Bear River National Wildlife Refuge at 723-5887.

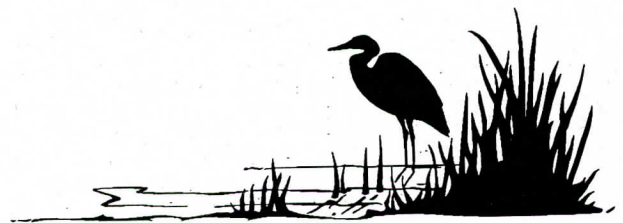
LOCAL NEWS

Have you looked beyond the cover of your *Audubon* magazine for November-December 1994? If you have, you've probably read the wonderful article on page 42 entitled "Slowing Down in Logan Canyon."

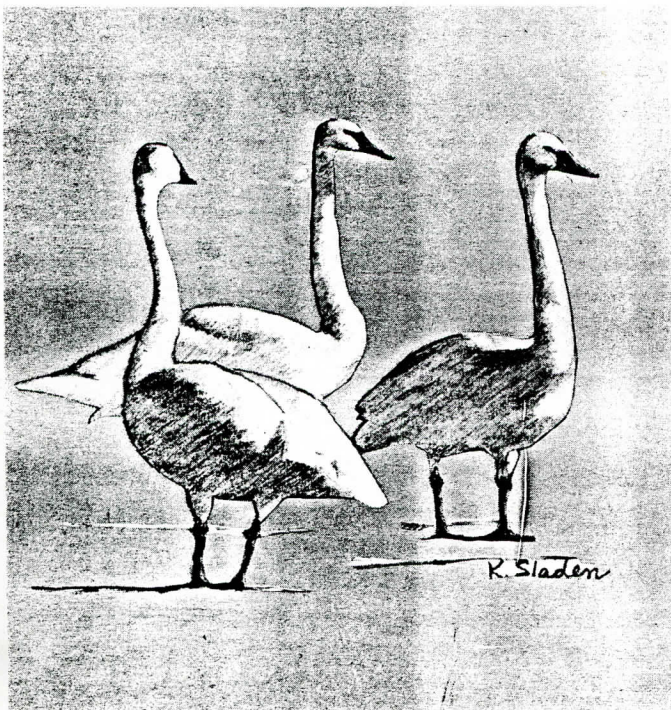
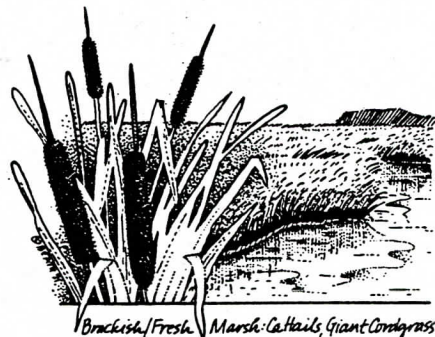
Would you like to share the article with your friends and neighbors? We think it would be a wonderful gift to the community if those of you who do not keep the magazine for later reference would place it in a public waiting room such as your doctor, dentist or lawyer.

Please let Mae Coover know at 752-8871 if you place your magazine in a waiting room. Mae is contacting *Audubon* to request additional copies for wider coverage in Cache Valley.

Bear River Refuge Christmas Bird Count



The staff at Bear River Migratory Bird Refuge invites you to join us in our 55th annual Christmas Bird Count. We are planning to meet at the 'Old Headquarters' site (beginning of the tour route) on Sunday, December 18, 1994 at 8:00 a.m. Observers will be organized and given directions at that time. Four-wheel drive vehicles may be necessary, depending on the weather; and we would appreciate anyone having a 4X4 to bring that vehicle. Those interested please contact the refuge office at 723-5887 so that transportation and group arrangements can be made. This is an excellent opportunity to see areas of the refuge closed to the public and to keep the tradition of the past 54 years alive!



Important Audubon Election Under Way in the ROCKY MOUNTAIN REGION

Nominations are now open for the chapter-selected candidate from the Rocky Mountain Region to the National Audubon Society Board of Directors. Any chapter in the Rocky Mountain Region may nominate one candidate for the Board this fall and winter. The election to choose the candidate will be held in the spring.

Nominees should be willing and able to:

- Help set overall national policies.
- Articulate the issues and concerns of our region.
- Participate in fund raising and maintain the fiscal integrity of National Audubon Society.
- Fill the position for the next three years, beginning December 1995.
- Attend four board meetings per year, each three days in length.

Contact a chapter officer with your suggestions. The nomination from your chapter should be sent to the regional office by January 31, 1995.

Skipper Bay Is Threatened

The 55-unit Utah Lake State Park campground to be built in Skipper Bay will greatly impact the ecosystem.

This campground is part of the "mitigation" for the Provo airport expansion.

The US Army Corps of Engineers 404 permit allows filling or dredging of only two acres of "jurisdictional" wetlands. It appears to us the entire project is in wetlands.

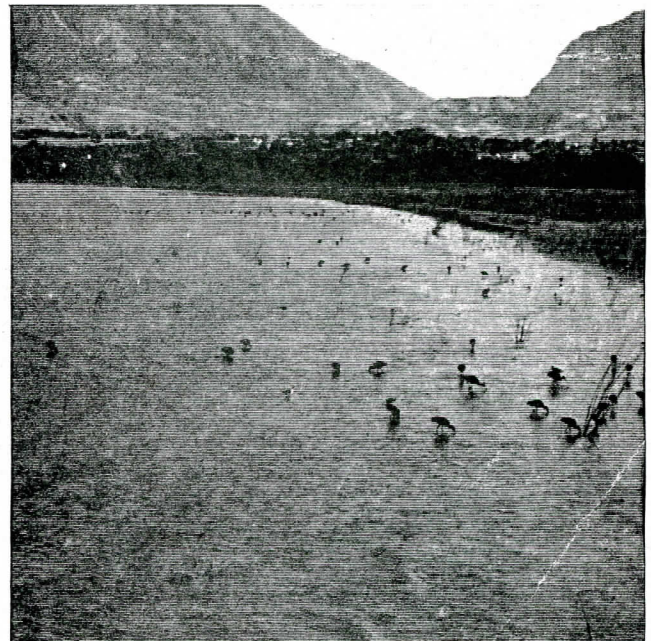
Construction is planned to begin immediately. The photos opposite show the Skipper Bay area which will be destroyed.

To voice concern on this project call Mayor Stewart, Governor Leavitt and your congressional representative.

If you want to help in this effort to save wetlands, drop us a note.

— Lillian Hays

Chair



NATIONAL NEWS

National Audubon Society



January

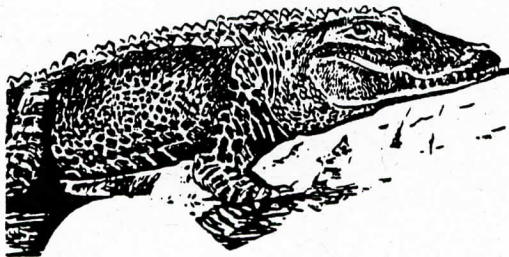
Costa Rica \$2395 from Miami Jan 5-15

February

Panama \$2195 from Miami Feb 11-19
Wolf Ecology Northern MN \$1250 Feb 11-18
Yellowstone Winter Ecology \$1250 Feb 25- March 4

March

Death Valley CA \$1150 March 4-11
Belize \$2295 from Miami March 20-27



July

Olympic Peninsula Ancient Forests
\$1150 July 8-15
Venezuela: Llanos, Coast and the Andes
\$2395 from Miami July 5-16

August

Mt. Ranier/Mt. St. Helens \$1150 Aug 5-12
Badlands/Black Hills \$1150 Aug 12-19
Boundary Waters Wilderness Canoe \$995 Aug 19-26
Upper Mississippi River Canoe \$1095 Aug 26-Sept 2



November

Kenya: African splendor \$3195 plus air
Oct 28-Nov 13 - coast extension available

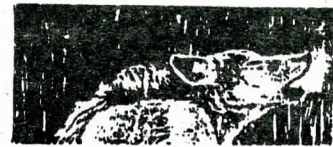
December

Amazon Rainforest Holidays Dec 23-30

note our new address!

AUDUBON ECOLOGY & PHOTOGRAPHY TOURS

Audubon Center of the Northwoods
P.O. Box 530 Sandstone, MN 55072
(612) 245-2648 FAX (612)-245-5272
write or call for full trip itineraries



April

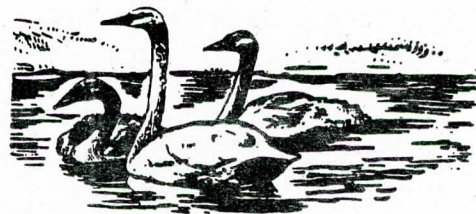
Big Bend TX \$1150 April 22-29

May

Southeast Arizona \$1150 May 6-13

June

Yellowstone Endangered Species \$1150 June 10-17
Yellowstone Nature Photography \$1375 June 17-25
Trinidad/Tobago \$1995 from Miami June 17-27

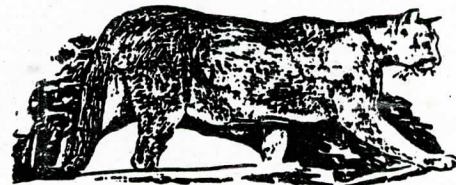


September

Glacier National Park \$1150 Sept 9-16
Ecology of the Wine Country CA \$1750 Sept 16-23
Boundary Waters Canoe \$995 Sept 16-23
Yellowstone Nature Photography \$1375 Sept 16-24

October

Yosemite/Sequoia Nature Photography \$1250 Oct 22-29
Churchill Polar Bears Photo (call for current cost) Oct 26-Nov 1
SW Canyonlands, UT \$1150 Sept 30-Oct 7



Experience excellence! Join us for a National Audubon Ecology or Photography Tour. We pride ourselves in creating a richer experience than you could readily find on your own. Meet lifelong friends, travel with expert guides and interesting companions, and discover a new part of the world.

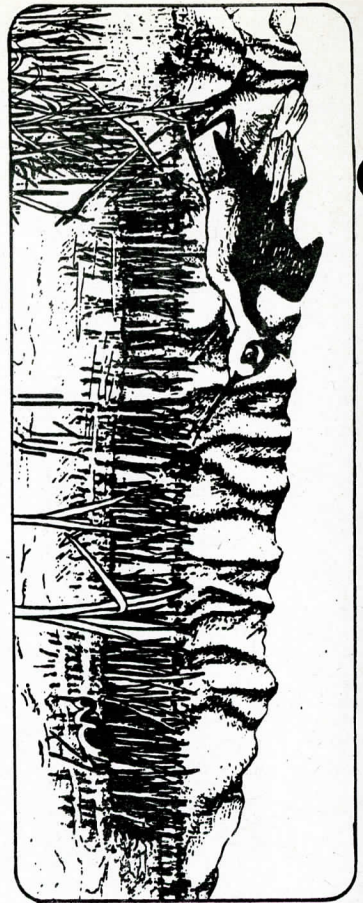
** College credit available ** Mastercard and Visa accepted**

artwork by
Hannah Hinchman

Mervin & Mae Coover
 435 Canyon Rd
 Providence UT 84332

THE STILT

BRIDGERLAND AUDUBON SOCIETY
 P.O. Box 3501
 Logan, Utah 84323



Nonprofit Organization
 BULK RATE
 U.S. Postage
 PAID
 Permit No. 104
 Logan, Utah

The Bridgerland Audubon Society meets the second Thursday of each month, October through May, in the Meeting Room of the new Logan City Building, 255 N. Main. Meetings start at 7:30 p.m. The BAS Planning Committee meets at 7 p.m. on the third Wednesday of each month, September through May. Locations may change monthly. Check calendar page. Everyone is welcome to attend.

President	Dawn Holzer, 258-5205
Vice President	Don McIvor, 563-6189
Secretary	Kristen LaVine, 753-5970
Treasurer	Susan Robertson, 752-4598
Conservation	Jaren Barker, 753-0242
Education	Jack Greene, 563-6816
Membership	Al Stokes, 752-2702
Field Trips	Al Stokes, 752-2702
Newsletter	Lois & Randy Olson, 752-9085
Circulation	Susan Durham, 752-5637
Publicity	Beth Walden, 753-0080
Hospitality	Bill & Marjorie Lewis, 753-8724
Hotline	Nancy Williams, 753-6268
Legislative Chairperson	
Trustees	

- 1991-94 Keith Archibald, 752-8258; Ron Hellstern, 753-8750
- 1992-95 Pat Gordon, 752-6561; John Sigler, 753-5879; Val Grant, 752-7572
- 1993-96 Tom Gordon, 752-6561; Rebecca Echols, 752-2367; Richard Mueller, 752-5637
- 1994-97 Scott George, 753-3918; Bryan Dixon, 752-6830; Barbara Rusmore, 755-0758

Membership in the Bridgerland Audubon Society includes a subscription to *The Stilt*, as well as the *Audubon* magazine. The editor of *The Stilt* invites submissions of any kind, due on the 15th of each month. Send to 280 N. 300 E., Logan, UT 84321.

PRINTED ON RECYCLED PAPER

National Audubon Society Chapter Membership Application

Yes, I'd like to join.

Please enroll me as a member of the national Audubon Society and of my local chapter. Please send AUDUBON magazine and my membership card to the address below.

My check for \$20 is enclosed.

NAME _____

ADDRESS _____

CITY _____ STATE _____ ZIP _____

Please make all checks payable to the National Audubon Society.



Send this application and your check to:
 National Audubon Society
 Chapter Membership Data Center
 P.O. Box 51001 • Boulder, CO 80322-1001

LOCAL CHAPTER

Bridgerland Audubon Society
 P.O. Box 3501
 Logan, UT 84323-3501

W-52
 Local Chapter Code
 7XCHA

Subscriptions to *The Stilt* are available to non-members for \$5.00 per year. Call Tom Gordon, 752-6561. Also, call Tom for new subscriptions or address changes.