

111° 37' 30" W
41° 52' 30" N

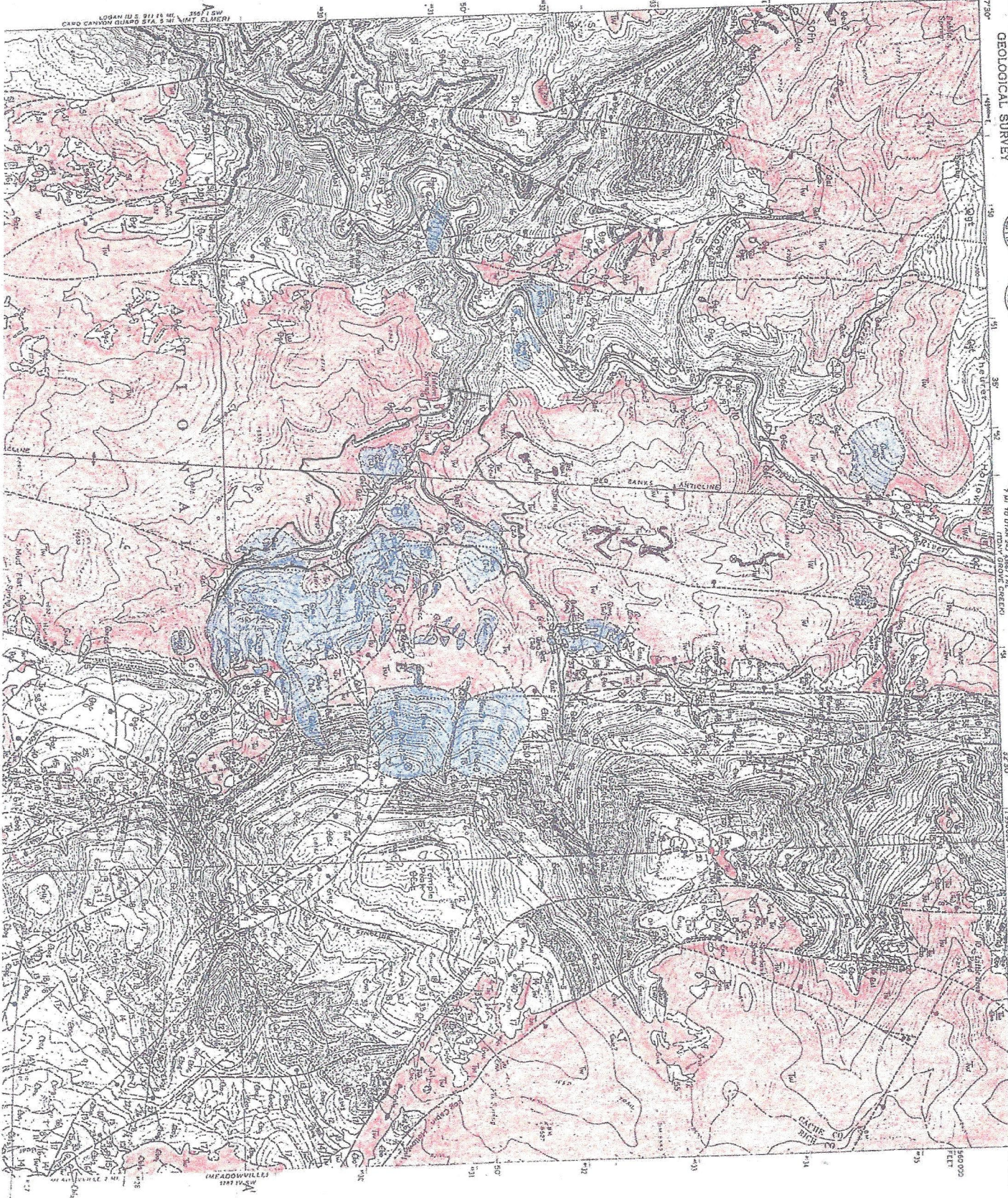
UNITED STATES
DEPARTMENT OF THE INTERIOR
GEOLOGICAL SURVEY



CANYON CITY, CO. 1905
1:50,000
111° 37' 30" W
41° 52' 30" N

119,000 FEET 1905

TEMPLE PEAK QUADRANGLE
UTAH
7.5 MINUTE SERIES (TOPOGRAPHIC)
1905
111° 30' W
41° 52' 30" N



LOGAN ISLS 91175 NE 356 FT GW
CARD CANNON GUARD STA. 2 MI MT ELMER

MAPADONVILLE